

The  
C.R.C.

FLASH!!!

Official Journal Published For Colorado Radio Collectors  
Dedicated to the Preservation and Documentation of Wireless, Radio, TV, and Associated Equipment

Volume 4 NOVEMBER ☺ DECEMBER 1993 Issue 6



C.R.C. NOVEMBER 14<sup>th</sup> MEETING  
Southwest Bank Building 1380 South Federal 1:00 PM

Official Journal of the  
**Colorado Radio  
Collectors**

Founded October 1988

Dedicated to the Preservation and Documentation of  
Wireless, Radio, Television, and Associated Equipment

**WANT ADS**

and

**ARTICLES**

Should be directed to the

**C.R.C. Editor**

1249 Solstice Lane

Fort Collins, CO 80525-1239

**DEADLINE NOTES**

\* It's the intention of this Editor to broadcast our journal bi-monthly just prior to the CRC meetings. Articles about, and pictures of your treasures, are welcomed as are *Wants-Sale* ads and any letters or comments about our great hobby. All materials used are the copyrighted © property of the *Colorado Radio Collectors*.

Your Editor will put together articles about your best finds, restoration and electrical repair techniques, or your recollections and stories about radio. Just provide a handful of information in any form.....and we'll put it together!

Our club can only succeed when we share our experiences, talents, needs, and adventures; you're being asked to contribute in whatever way you can. **SHARE** with us today!! Thank you!

**DEADLINES**

February 10 • April 10 • June 10  
August 10 • October 10 • December 10

**All Dues Payable  
on June 1<sup>st</sup>**

(Joining dues are prorated)

**\$12<sup>00</sup> Annually**

Larry Weide

5270 East Nassau Circle  
Englewood, Colorado 80110

Please do NOT make checks to CRC,  
rather to "Larry Weide, CRC Treasurer"

**MEETING LOCATION**

Unless otherwise noted in this Journal, beginning in January, meetings are held on the second Sunday of every other month (exception: third Sunday in May) at 1:00 PM at the *SouthWest Bank Building*, Community Room - 1380 South Federal, Denver. A swap meet follows the meeting in the bank parking area.

**C. R. C. OFFICERS**

(All area codes below are 303)

**President:**

Barney Wooters 770 • 5314 Denver

**Vice President:**

Jerry Tynan 642 • 0553 Golden

**Treasurer:**

Larry Weide 758 • 8382 Englewood

**Journal Editor / Secretary:**

Rick Ammon 224 • 5446 Ft. Collins

This publication was completed on a **Commodore Amiga A2000** computer and a **Hewlett Packard DeskJet 500** inkjet printer. The software program used is **PageStream V2.2** by **Soft Logik** of St. Louis, Mo. Graciously printed by **PRESSWORKS** of Denver, Colorado.

"Dimensions are limitless; time is endless." Chuang Tzu

The Wise man conquers the barriers of time and space with the New

**GREBE**

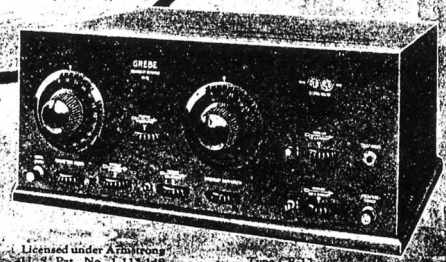
Broadcast Receiver

*Doctor My.*



Receive all broadcasting without outdoor antenna, loop, or storage battery!  
This Receiver employs Regeneration and Tuned Radio Frequency Amplification with only two simple tuning adjustments.

Write for "Seven Points of Satisfaction"



H. GREBE & COMPANY, Inc.  
Richmond Hill, N.Y.  
Western Branch, 451 East Jed St., Los Angeles, Cal.

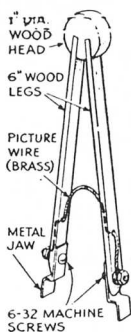
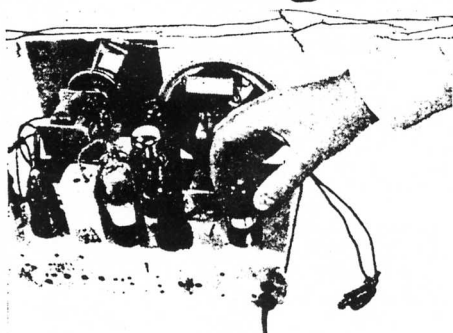
Licensed under A. H. Armstrong  
U.S. Pat. No. 1,113,449

Type CR-12

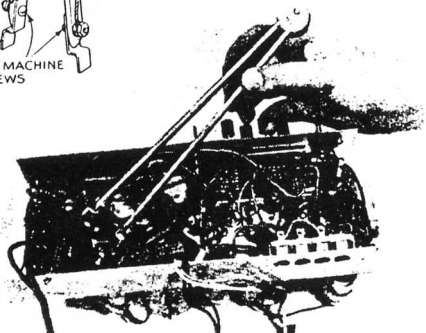
Tell them that you saw it in RADIO

# YE OLDE JUNKBOX

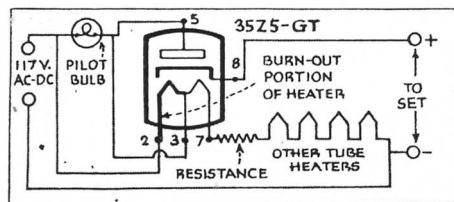
## Servicing Your Radio



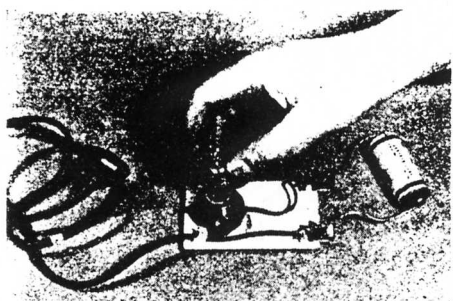
WORK CAN BE SPEEDED UP in servicing old radios with this gadget made from wooden photo tongs, such as is used on wet prints. Switch on the receiver and begin shorting the different fixed resistors. When the defective one is shorted, reception improves.



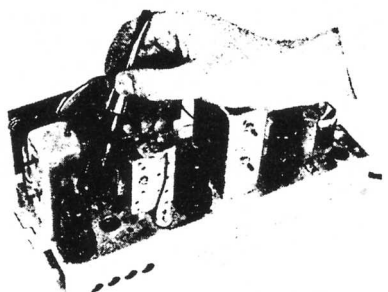
SOME SERVICEMEN HAVE TROUBLE with the AC-DC receivers that use the 35Z5-GT rectifier tube. This is shown by the pilot bulb blowing out when a new tube is inserted and the set is switched on. When these blowouts occur, the section of the tube's heater—just across the pilot bulb—is defective. As the set is switched on, the pilot bulb carries the load and, of course, blows out. The remedy is to replace the 35Z5-GT.



WPB HAS REDUCED TUBE TYPES by some 349 varieties, because they made up only about 1% of the total yearly sales. Smaller GT tubes will replace the larger G types, without loss in output. Sets formerly using a 25Z6-G, or a 25Z6-GT, will now obtain identical results with the 25Z6-GT/G tube.



INTERMITTENT AND FADING RECEPTION on some AC-DC receivers and phone combinations is caused by faulty construction of new single-ended tubes, without grid caps. To test for this trouble, tap all tubes with a wooden screwdriver handle, as shown below, and the defective one will induce static. It should be replaced.



A HANDY DEVICE TO HAVE on the workbench is this homemade neon condenser tester. It will work with either paper tubular or mica condensers of any capacity. If the condenser being tested is good, the neon will flash once. But if the condenser is leaky or shorted the neon will glow and sputter, showing it should be replaced. Tester works on DC or 90-v. battery.

# ON THE AIR

## Rick Ammon, C. R. C. Editor

The very first thought is to give a very special THANK YOU to our auctioneer, Jim Bursleson. Jim's been the catalyst in making our auctions fun and rewarding! We appreciate your help and the time you take to please our group. **A GREAT SHOW!**

At the time of this writing, CRC President Barney Wooters' daughter has been returned to the hospital due to complications of an earlier surgery. We, of course, wish her a very speedy recovery. On behalf of the club, Larry Weide sent flowers to help cheer her up. They're for you, too, Barney and Jane!

I'd like to take the opportunity to welcome the many new members who have joined the club in just the last several months! We hope you enjoy the group and will benefit from our experience as we glean from yours! Without sounding sexist, I'd like to point out one of the newcomers is Sandra Sendtko who seems to be every bit as excited about these machines we call "radio" as is any man I've ever met. I'm glad to see she became a member of the CRC along with Mark, her Other Half!

There were a couple of problems with the auction this year as one might expect. But each year we gather the experience we need for the next. One area we'll be concentrating on in the months to come, is the buy-back procedures. Suggestions of having a RESERVE, which would be made known before the bidding began, would iron out several wrinkles. If the seller has an idea of what he expects from an item, then, he would declare it as it's placed for bid. If no bids are taken, the owner presents the club with the five (5) percent "buy-back" fee on the RESERVE amount declared. We're not trying to "run the bid up" on the buy-backs. If the item is bid upon by those in attendance, then the owner has the right to bid (as a buy-back) on that item, just like any other bidder. If the owner takes the "buy-back" bid, then he would pay the club the standard five (5) percent of the final bid given by that owner. Hey, anyone can change his mind in the heat of an auction, right? This lets the crowd know there is a minimum bid and if they want to go beyond that, they can. Yet, will give the owner the chance to bid on his own item if he so wishes. **The most important point here is the pace of auction won't be dragged down by delays!** - Rick -

### FLASH FEATURES

AUCTION!...(pictures).....	1 & 10
Denver's Early TV Remembered.....	6
Word Find Revisited.....	8
Auction '93 Results.....	9

### REGULAR FEATURES

Ye Ole Junkbox.....	4
On The Air (From our Officers).....	5
The Scrounge Box.....	12
New Members.....	13
Minutes Of the Last Meeting.....	18
Want/4Sale Ads.....	19

### REGULAR NOTICES

Deadline Dates.....	2
Dues Information.....	2
General Mailing Address.....	2
Meeting Location.....	2
Contributors.....	5
Membership Notice.....	12

### Thank You!!

A special thanks to Russ Connell, Hal Vurt, George Stringe, Larry Weide, Jim Mise, and the Gannett Corporation for their helpful contributions to this issue

We sincerely thank member Lonnie Smith and his Denver company

### PRESSWORKS

for providing us with a super nice looking issue of the CRC newsletter.

# DENVER'S EARLY TELEVISION REMEMBERED

*Last June Gannett's newsletter to all employees, the Gannetteer, enlightened us with an article about one of its' retirees. Mr. Lewis give a glimps of Denver television in its heyday. This article is re-printed in its entirety with permission.*

*(By the way, remember the "Fred & Faye Show", Sheriff Scotty, or KBTV's "Clubhouse Nine" with the kids and dog puppets? What do you remember?? Tell your Editor!!)*

Jed Lewis, 65, retired in January from his job as an engineer at KPNX-TV in Phoenix. The *Gannetteer* asked Lewis to give readers a glimpse of the changes he witnessed in his 40 years in the television industry.

Television has changed a great deal during my 40 years in the business, from its programming to its technology. When I started as an engineer at KBTV (now KUSA-TV) in Denver in 1953, we didn't have computers, we didn't have color, we didn't even have videotape.

Now we've got robotic cameras, satellite and microwave transmitters, and equipment like the Sony Library Management System (LMS) that can store 5,000 commercials on tape, locate, and automatically run them.

Computers have had the most significant effect on television. When we first started using computers in the early 1960's, they were a real headache, but they've enabled us to do so many more things. They help us produce special effects and graphics - such as multi-colored weather maps - edit photographs and many other things we only before dreamed of. Before, the weather person used crayons and magnetic symbols to show weather patterns on a blank picture of a map.

Satellite technology, too, has changed how we get information - and when. We saw last year's rioting in Los Angeles as it was happening because of satellite technology. In the old days, a photographer would have had to film the event and mail the film back to the station for developing and editing before it could have been aired - a process that would've taken two days. Now microwaves, satellites and videotapes make immediate bi-coastal and global news coverage possible.

I was responsible for setting up cameras, video, audio and film when I first joined the station (KBTV - *Ed.*). Back then, I was a cameraman one day, audioman the next and projectionist the next. There was typically one operator per camera. Now, with robotic cameras, one person can run all the cameras (sometimes as many as seven) just by programming a computer.

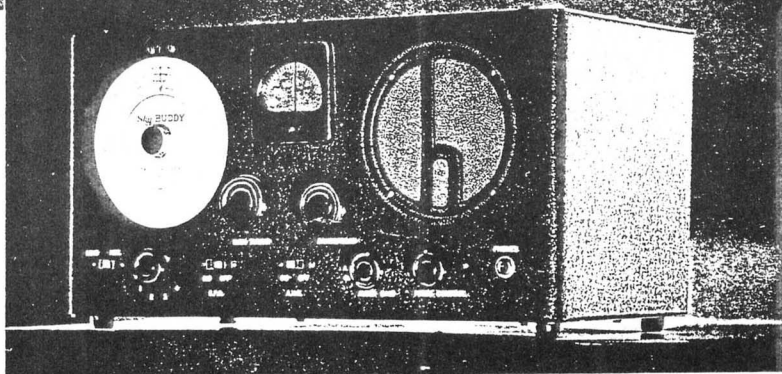
I transferred to KPNX-TV in Phoenix in 1982. When I retired last January, I was doing program delay using a videotape machine and a Panasonic automatic program delay unit (APDU). I pulled network programming from the East Coast off the satellite, recorded it and set it up to play back on a later schedule in the west. This included shows such as "A Current Affair," "Geraldo" and "Donahue."

To keep up with electronic advances, engineers have to continuously take courses to upgrade their skills. We used to be trained to fix as well as to operate our equipment. But because it's so much more complicated today, most stations have maintenance engineers who do nothing but repair and maintain equipment.

At one time, engineers had to be licensed by the FCC. They had to pass a test to qualify. Most stations wouldn't hire you unless (Continued on page eighteen)

the NEW

SKY BUDDY



with 10 Meter Band and Electrical Band Spread

How can it be done? Here's a New SKY BUDDY designed to include the 10 meter band and with the same Electrical Band Spread used in higher priced Hallicrafters models, with better all-around performance than ever before—but still selling at the same amazingly low price!

Here's how we can do it! The SKY BUDDY was first built as a good junior communications receiver for the amateur and short wave listener with a limited purse. Since then OVER 10,000 SKY BUDDIES have been built. With such wide-

spread acceptance, we have been able to make progressive improvements in this sensational receiver without adding to its cost!

This NEW SKY BUDDY has sensitivity, image ratio, signal-to-noise ratio and all-around performance that excels many receivers sold at twice its price. It's complete, with all the essential controls for communications reception, built-in speaker, full coverage from 44 MC to 545 KC—a far greater value than ever before. Let your Hallicrafters dealer show you the SKY BUDDY, or write for complete information.

Check These Features!

- \* 6 Tubes with 8 Tube Performance
- \* 4 Bands
- \* Complete Coverage 44 MC to 545 KC
- \* Covers 10 Meter Band
- \* Electrical Band Spread
- \* Separate Band Spread Dial
- \* Beat Frequency Oscillator
- \* Pitch Control
- \* Built-in Speaker
- \* AVC Switch
- \* Send-Receive Switch
- \* Phone Jack
- \* Band Switch

Amateur's Net Price \$29<sup>50</sup> Complete

the hallicrafters inc

2503 Indiana Avenue Chicago, U. S. A. Cable Address: Hallicrafters, Chicago

WORLD'S LARGEST BUYERS OF AMATEUR COMMUNICATIONS EQUIPMENT

# WORD FIND

## REVISITED

By Rick Ammon

Last issue I gave you a Word Find based on *BRAND NAMES* of receivers from the 1920's through the present. The instructions were:

*"Words may lie across, down, diagonally, or backwards, but always in a straight line. Words may overlap and letters may be used in more than one word. As you find each of the 47 words (which includes two abbreviations), draw a circle around it. Good fun!!"*

Nobody told me they were able to solve the puzzle. Either it was very easy or very hard. So, as I promised, here are the names (in no particular order):

Westinghouse	Zenith
Jackson Bell	Meissner
Heathkit	Magnavox
Regency	DayFan
Sparton	Adler
Ozarka	DeWald
FADA	Grebe
Atwater Kent	Philco
Stromberg Carlson	Motorola
DeForest	Bendix
Kellogg	Federal
Travler	Scott
Arvin	Pilot
Sonora	Crosley
Leutz	Emerson
Garod	Sony
Admiral	Freed
Freshman	Ware
Stewart Warner	Kennedy
Tuska	Amrad
ERLA	Delco
Truetone	GE
Silver Marshall	RCA

T	N	E	K	R	E	T	A	W	T	A	F	H	T	I	N	E	Z
T	S	T	R	O	M	B	E	R	G	C	A	R	L	S	O	N	R
S	M	E	I	S	S	N	E	R	L	A	R	I	M	D	A	F	Z
L	A	R	R	E	N	R	A	W	T	R	A	W	E	T	S	E	J
L	G	E	N	O	T	E	U	R	T	U	S	K	A	S	N	D	A
A	N	M	R	F	F	R	E	S	H	M	A	N	C	O	S	E	C
H	A	S	D	A	Y	E	L	S	O	R	C	Q	S	O	I	R	K
S	V	C	O	C	L	E	D	O	R	A	G	R	N	C	D	A	S
R	O	G	R	E	G	E	N	C	Y	O	E	Y	O	F	Q	L	O
A	X	E	A	R	O	N	O	S	D	M	S	P	A	R	T	O	N
M	G	T	O	L	I	P	E	B	E	R	G	X	I	D	N	E	B
R	A	L	O	R	O	T	O	M	N	R	N	O	F	A	L	R	E
E	K	E	L	L	O	G	G	L	N	E	A	Q	R	O	F	O	L
V	T	T	O	C	S	D	A	Q	E	R	F	L	E	U	T	Z	L
L	R	E	L	V	A	R	T	T	K	A	Y	R	E	L	D	A	A
I	N	I	V	R	A	B	L	D	E	W	A	L	D	F	M	R	D
S	H	E	A	T	H	K	I	T	Q	K	D	A	R	M	A	K	A
P	O	F	W	E	S	T	I	N	G	H	O	U	S	E	W	A	F

If you'd like to "build your own" puzzle and send it in, please do! These take just an hour or so to put together and it adds a lot of fun to the **FLASH!** When you send yours to the Editor, don't forget to send the solution, too, to be printed the next issue! Oh, by the way, I left one word out of the list above....just to make it more interesting! Write the Editor if you find it! ■

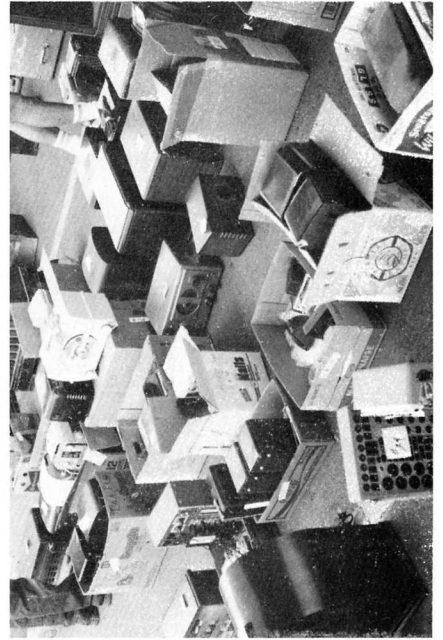
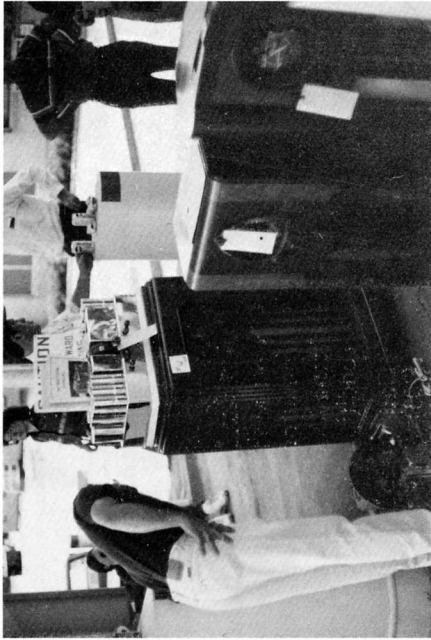
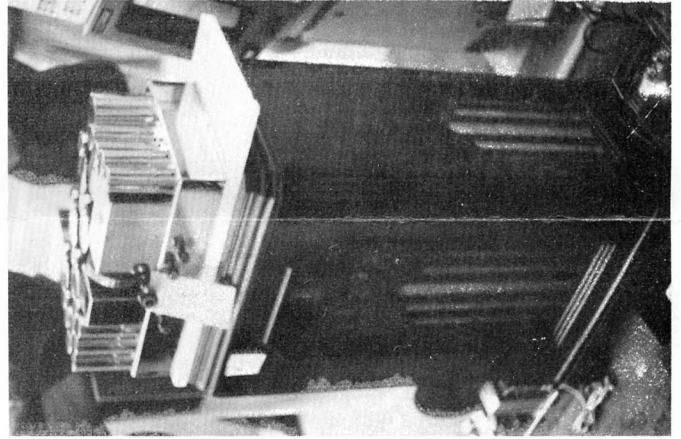
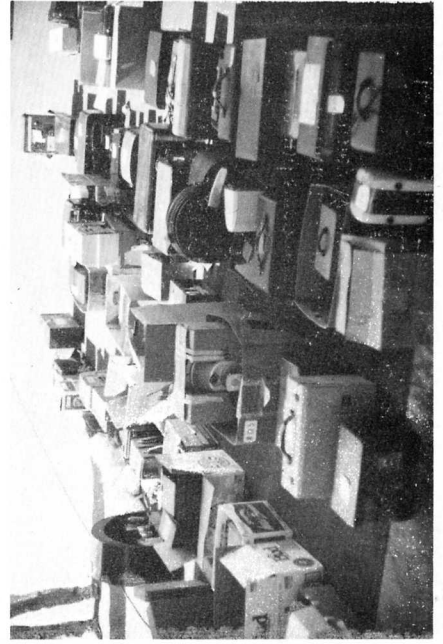
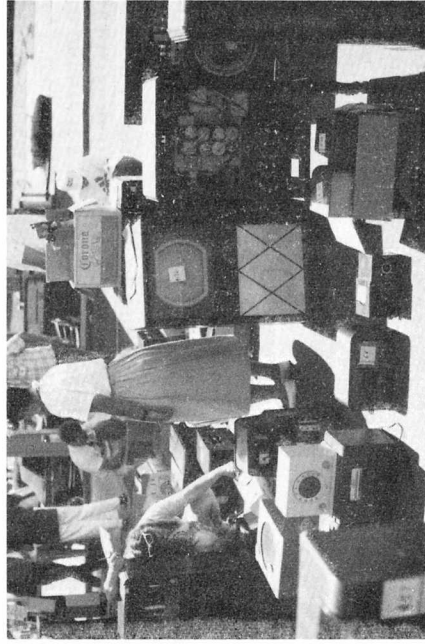


# AUCTION '93

Treasurer Larry Weide provided this list of auction prices. Condition of each is not available, but pictures on the accompanying pages give an indication, as most were good to better. One of the "Stars of the Show" was a beautiful Scott Imperial that changed hands for \$600! Owners were allowed to buy back their own items which are marked with an asterisk (\*). There were 170 lots available to bidders; the majority are here. If a lot description wasn't specific enough, I didn't include it in this listing. It should be noted these prices do not necessarily represent any accurate market value or true assessment of worth due to the nature of an auction. - Editor -

RCA K105 console	\$ 20.	Atwater Kent 55 console	\$ 165.
Airline 62-402 console	45.	Magnavox Small console	45.
GE M-125 console	45.	Parts & Tube Tester	25.
Westinghouse WR374 console	5.	Zenith 8G005 portable	35.
Zenith Trans-Oceanic portable	12.50	Small Plastics (qty 4)	5.
GE BX table (metal)	35.	Philco console	10.
Zenith 6G038 table (wooden)	65. *	Packard Bell 602 table	10.
Motorola 6X32E transistor portable (metal)	67.50 *	Ozarka Jr. table	10.
FADA 764 table (wooden)	45.	Zenith table (plastic) (qty 2)	20.
Ward 62190 Console & Sparton table	20.	Coronado RA44 table	12.50
Stromberg Carlson TV cabinet & Voltmeter	10.	Grunow 801 console	50.
Scott Imperial with chromed chassis	600.	Aircastle table (wooden)	35.
Zenith 9S console	185.	Travelair 5091 table (plastic)	30.
Grunow 2100 console	110.	Majestic table (wooden)	20.
Radiola 3 with replacement WD-11 tubes	160.	Sentinel 3527 (plastic/wood)	5.
AK 20C table (wooden)	40.	Panamer/Airline table (wooden)	17.50
RCA K80 console	25.	Coronado L77 console	20.
Motorola Airboy	10.	Coronado tombstone	60.
Crosley 601 Band Box	15.	RCA 103 tapestry speaker	110.
Philco 48-482 table (wooden)	25.	Caliphone record player	5.
Sparton BW-10 table (wooden)	10.	Philco 624 tombstone	45.
RCA 100A speaker	30.	GE Multiband table (wooden)	35.
KILO Wet Battery	85.	Grunow 12B console	90.
Zenith 60029 table (wooden)	30.	Airline console	30.
Kadette table (wooden)	20.	Sparton 5AW06 table (bakelite)	12.50
Zenith K725 table (bakelite)	7.50	Telex Hotel Radio	5.
Seco Tube Tester	25.	Minerva table (wooden)	10.
Philco 20 cathedral	140.	Philco 41255 table (wooden)	37.50
Sony Clock-Radio	5.	Silvertone Cab Conv Tombstone	25.
Guild Treasure Chest (parts)	5.	Japanese table (wooden)	5.
Grundig portable	12.50	Philco 46-1226 console & Ch	22.50
GE "Coat Pocket" portable	5.	Grunow 631 console	45.
Motorola Suitcase	5.	Zenith 5H41 portable	17.50
Knight Voltmeter	7.50	General Motor table (wooden)	10.
RCA VTVM	20.	Emerson table (wooden)	10.
Freshman Q15 Metal Box	25.	RCA 6RF-9 table (wooden)	7.50
EICO Audio Generator	7.50 *	Westinghouse portable	5.
		Zenith 6G05 table (bakelite)	10.
		RCA Radiola 48 console	52.50

(Continued on page eighteen)



# The Scrounge Box

A Continuing Column

By Larry Weide, CRC Treasurer

Hi... all you CRCers! Sometimes even the great race horses, like Man-O-War, have to have an occasional change of pace. So it is with nots-O-great hacks like me. Consequently, the title for this month's 'Box is "**The List You've Been Waiting For**". Hey, how often have you been in the middle of a project when you've discover that you need something? You know, a knob, or some grill cloth, or whatever. Of course, all this stuff is certainly available, but wouldn't it be nice to have a convenient reference list of sources that come recommended from experienced users?

To help me accomplish this "quest for the Grail" like objective, I've polled (pestered?) a lot of seasoned folks in the CRC for their favorite sources of goods and services. Surely, this will NOT be an exhaustive list by any means, but it will contain those sources that have been used and have provided satisfying results. In addition, some of these sources may have other items or services to offer - don't forget to inquire if you use them. Note, too, that since the vast majority of the Flash readership lives in the Denver area, I was sure to include the local establishments (asterisk items) that many of us have found to be worthwhile.

If you know of any more "good" providers of parts and/or services *PLEASE* let me know.

## SERVICES:

- |                         |   |
|-------------------------|---|
| <b>Glass</b>            | * Monarch Shower Door & Glass - Custom bent glass<br>1410 S. Santa Fe Dr., Denver 303-777-3087<br>Ask for Ken |
| <b>Metal Plating</b>    | * Ajax Plating<br>1423 S. Broadway, Denver 303-777-8930   |
| <b>Speaker Reconing</b> | * National Speaker - Discount to CRC members<br>1559 S. Broadway, Denver 303-777-4970                         |

## TECHNICAL REFERENCE:

- |  |  |
|--|--|
| <b>Sams Photofact</b><br>(1946 to Present) | * Denver Walker Wintronic - No out of print folders<br>1001 W. Arizona Ave, Denver 303-744-9450<br><br>Howard W. Sams & Co. 1-800-428-7267 |
| <b>Instrument Manuals</b>                  | Tucker Electronics - Pricey but available<br>1717 Reserve St.<br>Garland TX 75042, 800-527-4642  |
| <b>Misc. Documentation</b>                 | * A number of CRC members have reference materials that can be copied - <b>JUST ASK!</b>   |

# WELCOME NEW MEMBERS

*Steve & Eloise Aiken*

Albuquerque, NM

*Robert Bauman*

Lakewood

*Roger & Darcy Belmares*

Loveland

*Geoffrey Campbell*

Denver

*William Cawfield*

Grenada Hill, CA

*Russ & Eloise Connell*

Aurora

*William & Virginia Grimm*

Aurora

*Don & Gail Loomis*

Englewood

*Jake Madsen*

Englewood

*Jim McCutcheon*

Aurora

*Tim Pouliot*

Lakewood

*Sandra & Mark Sendtke*

Denver

*Paul J. Thompson* WGØC

Littleton

*Ray Windrix*

Colorado Springs

*Southern California Antique*

*Radio Society - SCARS*

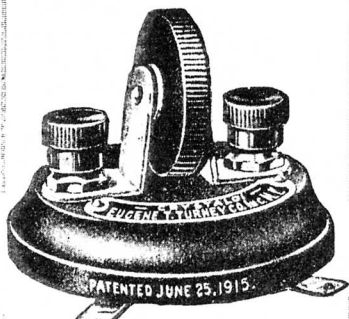
*c/o Alan Smith - President*

San Diego (Newsletter Exchange)

We have little information about the collecting interests from most of these new members. Please fill out the "INTERESTS" form available from your Editor. Thanks!

## CRYSTALOID A Permanent, Sensitive Wireless Detector

Perpetual Service  
Without Expense



Type O. Price, \$3.50  
Postage, 10c.

OVER 10,000 IN USE

### WIRELESS MEN

On land and sea prefer the Crystaloid Detector to any other for they know the Crystaloid will get it if it is to be had.

### OUR NEW CATALOG

Containing full information regarding our entire line of wireless apparatus can be had for five cents in stamps. We are specialists in wireless receiving apparatus.

### CRYSTALOID DETECTOR

Information furnished free.

**Eugene T. Turney Co.**

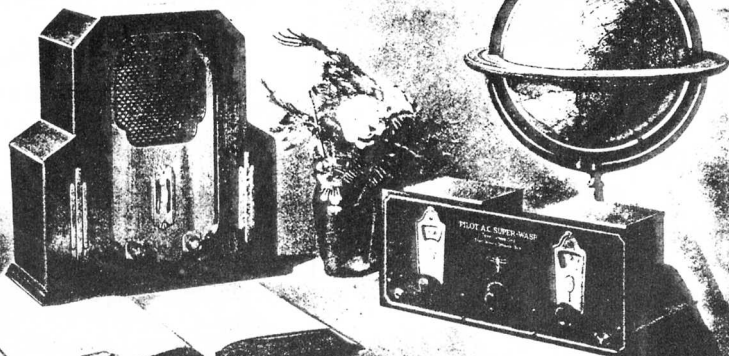
2595 Third Ave. New York City

*Popular Mechanics* ♦ 1916

*Next Issue's  
Feature....*

**YOUR  
ARTICLE !!**

# World Famous Radio Receivers



## Console Quality

in a Midget Broadcast Receiver  
You Can Place Anywhere

### PILOT MIDGET

This attractive two-tone walnut miniature A. C. receiver has proved the equal of high priced consoles in many locations throughout the country. Because—it embodies console features; 2-224 Screen Grid stages, 1-224 Screen Grid Power detector, 1-227 Audio stage, 1-245 Power Audio output stage and specially designed electro dynamic speaker. A super powered 280 voltage supply gives trouble-free operation from any 110-20 volt house current line.

Pilotron tubes are standard equipment because Pilot retailers know none are more reliable.

PRICE  
Complete in  
Modernistic  
Cabinet

**\$59<sup>50</sup>** less tubes

## For World-Wide Radio Reception

Short and Long Waves, 14 to 500 Meters

### PILOT Super-Wasp

*Rev. J. W. Nilsen, Bolongue, Congo-Belge Africa* says: "Here in the heart of Africa I have received 9LO, JB, 2BL, 5SW, AFK, PCJ, WGY (W2XAF), WRNY (W2XAL) and more stations on loud speaker with my Pilot Super-Wasp."

*David W. J. Jones, Brisbane, Australia* says: "I have received on my Super-Wasp all the test transmissions between W2XAF (Schenectady, U. S. A.) and VK2ME (Sydney NSW), Aero, ICT Holland, GSSW England and Sydney—London phone service."

*Austin R. Baldwin, St. Raphael (Var.) France,* says: "I heard from RDKA 25.4 meters. We will now rebroadcast a concert from London. Shortly after the music from London came in clearly, having twice crossed the Atlantic."

**Pilot Super-Wasp Comes in KIT FORM**  
which can be assembled in a few hours

BATTERY SET KIT

**\$29<sup>50</sup>**

Kit K-110: The battery-operated Super-Wasp. Batteries and Tubes extra.

A. C. SET KIT

**\$34<sup>50</sup>**

Kit K-115: The A.C. Super-Wasp. Use your own ABC pack or Pilot K-111, specially designed for the Super-Wasp. Power Pack and Tubes extra.

PILOTRON  
RADIO  
TUBES

ENDORSED BY  
PROFESSIONALS



# PILOT RADIO

At Dealers Everywhere or Write to

**PILOT RADIO & TUBE CORPORATION**  
LAWRENCE, MASS.

Chicago Office:  
234 N. Wells Street

New York Office: 525 Broadway  
OFFICES IN PRINCIPAL COUNTRIES OF THE WORLD

San Francisco Office:  
1278 Mission Street

Radio News ♦ January 1931

## TECHNICAL REFERENCE: (Continued from page 12)

**Rider Manuals**  
(1920's thru 1950's)

\* The Denver Main Public Library has a complete copy of the Rider manuals

## MATERIALS:

**Plastic**

\* Regal Plastics - Plexiglass in small quantities  
5251 S. Rio Grand, Englewood 303-794-9823

**Brass**

\* Caboose Hobbies  
500 S. Broadway, Denver 303-777-6766

**Misc. Hardware**

\* A&A Hardware  
4509 S. Broadway, Englewood 303-761-0747

**Decals & Cabinet  
(Repair Material)**

Antique Electronic Supply  
6221 S. Maple Ave., Tempe, Arizona 602-820-5411

**Colored Lacquers**

\* Paint & Lacquer  
2705 S. Raritan St., Englewood 303-761-0743

**Wood Veneer  
(And Supplies)**

\* The Woodworkers' Store  
1550 S. Colorado Blvd., Denver 303-782-0588

\* Woodcraft  
4403 S. Tamarac Parkway, Denver 303-290-0007

## PARTS:

**Volume Controls  
(& other NOS)**

\* Fistell's Micro Electronics - Ask for Darlene  
1001 N. Bannock, Denver 303-629-1312

**Phono Parts**

\* Fistell's Micro Electronics

**Philco Audio Xfmrs**

\* Fistell's Micro Electronics

**Grill Cloth**

Antique Electronic Supply

John Okolowicz  
624 Cedar Hill Rd., Ambler, PA 19002

**Old Style Power Cord**

Antique Electronic Supply

**Tubes**

Antique Electronic Supply

**Knobs & Dials**

Antique Electronic Supply

**Knobs & Escutcheons**

Larry Borodonaro - excellent quality!  
5744 Tobias, Van Nuys, CA 91411 818-786-2500

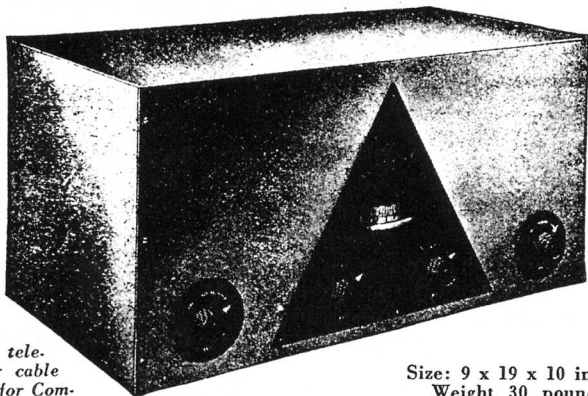
**Dial Lenses**

Wade's World of Knobs  
7109 Arbor Ave., Mesa, AZ 85208 602-830-7849

# World-Wide Reception

*With the NEW Short-Wave*

## Norden-Hauck SUPER DX-5



Write, tele.  
phone or cable  
TODAY for Complete  
Information

Size: 9 x 19 x 10 inches  
Weight 30 pounds

*Entirely New Advanced Design*      *New Pentode Tube*  
*Sensational Distance*      *Range 20-200 Meters*  
*Reliable Performance*  
*Adaptable for Long Waves and down to about 10 meters*  
*for Experimental Reception*  
*A-C and D-C Models*

*We have an attractive proposition for the  
progressive dealer and professional service man.*

**NORDEN-HAUCK, Inc.**

South St. and Delaware Ave.

**Engineers**

Philadelphia, Pa., U. S. A.

Cables: "Norhauck"

Radio News ♦ November 1930

# || ARE YOUR || || DUES DUE?? ||

If your address label reads "93/11" or  
earlier, your dues'r'due IMMEDIATELY!!

**ANNUALLY PRO-RATED TO JUNE 1<sup>ST</sup>**

## PARTS: (continued from page 15)

### Capacitors

Antique Electronic Supply

Frontier Electronics - Catalog available  
Box 38, Lehr, ND 58460 701-378-2341

### Resistors

\* Quest Electronics  
955 Bannock, Denver 303-623-7700

\* Fistell's Micro Electronics

### Power Transformers

\* Dick Hagrman 303-794-6674

### Misc. Parts

(mostly newer stuff)

\* Gateway Electronics  
2525 N Federal Ave., Denver 303-458-5444

\* Crump Electronics  
6340 W. Mississippi Ave, Lakewood 303-936-4407

\* J.B. Saunders  
4700 Sterling Dr., Boulder 303-442-1212

\* Fistell's Micro Electronics

### Old, Original, Hard To Find "Stuff" (Mostly Used)

Playthings of the Past - \$2 catalog available  
9511-23 Sunrise Blvd., Cleveland, OH 44133,  
216-582-3094

\* Bill Buseti  
1124 W. 2nd, Florence, CO 81226 719-784-3540

## PUBLICATIONS:

### Wanted/For Sale Tech Articles And Ads

Antique Radio Classified (Monthly)  
P.O. Box 2-49 ("49" is ID Code assigned to CRC)  
Carlisle, MA 01741 508-371-0512

Antique Wireless Association (Quarterly)  
P. O. Box E  
Breesport, NY 14816

Radio Age (Monthly)  
636 Cambridge Road, Augusta, GA.

Transistor Network (Monthly)  
R.R. 1, Box 36, Bradford, NH 03221 603-938-5051  
(Transistor Radio buffs of all kinds)

Wireless Trader (Twice per month)  
4290 Bells ferry Road Suite 106-36, Kennesaw,  
GA 30144, 404-591-7528

### Jukeboxes Ads & Articles

Always Jukin'  
221 Yesler Way, Seattle, WA 98104 206-233-9460 ■



# AUCTION '93 (Continued)

Emerson 810 table (plastic)	\$ 12.50	TV Console	\$ 12.50
Westinghouse "Refrigerator"	45.	Hallicrafter S38C	35.
Philco PT43 table (wooden)	30.	Box of Transistors (approx. 6)	15.
Olympic 6A606 (portable)	5.	Box of Transistors (approx. 6)	40.
Philco 41-300 console	80.	ICO Tube Tstr/PACO VTVM	7.50
Mitchel Bed Lamp Radio (qty 2)	25.	Philco PT69 table (wooden) Clk	50.
Radiola Speaker model 100	20.	Philco 84 CA	150.
GE F63 table (wooden)	37.50	Crosley B587 TO	50.
Emerson BX356 table (wooden)	40.	Zenith table (battery)	17.50
Truetone D724 table (wooden)	50.	Zenith H500 (portable)	40.
Newcomb/Halley Speaker	30.	Zenith H500 (portable)	35.
Teletone 109 table (bakelite)	5.	Grundig 2028U table (wooden)	30.
Zenith H615Z table (bakelite)	5.	GE A64 TO	90.
Aurotone 4BX2 (portable)	7.50	Mitchell TSB47	20. *
RCA 66X2 table (bakelite)	22.50	Philco 41-220 table (wooden)	35.
Traveler T200 table (plastic)	22.50	Detrola 283 table (battery)	60. *
Motorola 59T5 table (wooden)	5.	Airline 14BR table (battery)	55.
Hallicrafter S40B	20.	Silvertone 2026 table (battery)	30. *
Philco 38-15 table (wooden)	30.	Jewel "Trixie" table	65. *
Crosley 56TN table (wooden)	30.	Phillips B4X79A S/W	45.
Stromberg Carlson 920L Ch/Sp	5.	Silvertone Wire Rec	30. *
Zenith 5H41 (portable)	17.50	Supreme Tube Tester	60. *
RCA 6RF-9 table (wooden)	7.50	Morse Code Keyer	20. *
		AC Dayton (Battery/circa 1926)	70.

## DENVER'S EARLY TELEVISION (Continued from page six)

you had a license. Now, engineers can apply for a certificate without taking a test. The certificate is a pledge to abide by FCC operating rules and failure to do so carries the same penalties as a license would.

Color, which was first broadcast in 1954, although it didn't go mainstream until the mid-1960's, improved the quality and enjoyment of TV. My first memories of color were network-aired baseball games. I didn't know how it was done, but it was like seeing my first airplane or first automobile. Amazing. The quality then wasn't as sharp as it is now. It was fuzzy and snowy.

As the demand for TV programming has increased, staffs have grown. When I joined KBTU, the whole station employed about 80 people. Now, there are at least that number just in the KUSA-TV news department.

Stations are on the air a lot longer and, therefore, need more shifts of workers. We used to be on the air only about 10 hours a day. Some stations didn't even sign on until late afternoon. Now, stations run programming 24 hours a day or close to it. Also, newcasts used to be 15 minute fillers in between shows. They later went to half-hour and now some stations offer news for two and three hours in a row.

Increased air time and channel choices have affected the quality of programming. There are some very good programs nowadays, but because there's so much programming, there's a lot of junk, too. Also, with the increased competition that has resulted from more channels, I don't think stations have the luxury to experiment and take risks. In the old days, stations were pioneers and could do different things. Now, you can't fail or you're out. ■



## CONTRIBUTIONS NEEDED



Seeking articles and stories relating to radio, TV, or associated equipment for use in our publication. Tips, suggestions, hints, and descriptions of restoration techniques solicited

# The Open Trunk

## Help:

- I need the "Stage Selector" switch for my Zenith 4R to replace the broken one. (May be the same switch in the 3R)

**Hal Burt**

(303) 762 • 9062

## Wanted:

- The *Collector's Guide To Antique Radios - FIRST EDITION* (blue covers) by Marty & Sue Bunis
- **Majestic** (Grigsby-Grunow) Model 92 HighBoy Console (pictured in Bunis II, pg 109) in good and working condition.
- Transistor radios in very good condition with "CD" marks ("▼") at 1240 Kc and 640 Kc.
- The following R.C.A. parts:

Condensers: UC1014 UC1015  
UC1631 UC1632 UC1635  
UC1803

Grid Leak: UP1719

Ammeter: UM530

**Rick Ammon**

1249 Solstice Lane

Fort Collins, CO 80525-1239

(303) 224 • 5446 after 7pm

## Wanted:

- Good complete superheterodyne chassis for 1934 **Silvertone** tombstone. Has (4) knobs.

**Russ Connell**

530 Nome Street

Aurora, CO 80010

(303) 364 • 2721 (H)

(303) 744 • 4093 (W)

## Wanted:

- **Silvertone** 215 Portable, Green
- **GE** early '40s R/PH Table Wrap-around Grill One Side
- **LaFayette** KT-600 PreAmp
- **LaFayette** KT-500 AM-FM Tuner
- **Allied** Catalogue '50s

(Continued Below)

## 4 Sale/Trade:

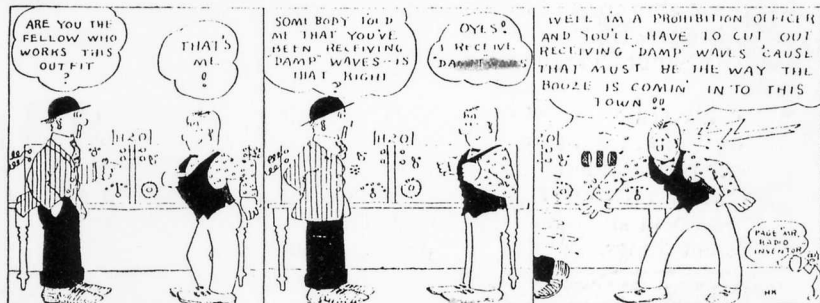
- **Farnsworth** Chairside Model GK-034 Basket Case
- Duplicate Book - *Vintage Radio*, Greenwood
- **RCA** V-405 Console Basket Case
- **Measurements** 65B Signal Generator

**George Stringe**

3075 Moorehead Ave

Boulder, CO 80303

(303) 494 • 9261



One More Argument for C. W.

Radio News ♦ August 1922

# Colorado Radio Collectors

1249 Solstice Lane  
Fort Collins, CO 80525-1239



Fred Bantin 9406  
2543 17th Avenue Court  
Greeley, CO 80631

**POSTMASTER: FIRST CLASS MAIL RUSH!!**

If undeliverable, please return to sender. Thanks!